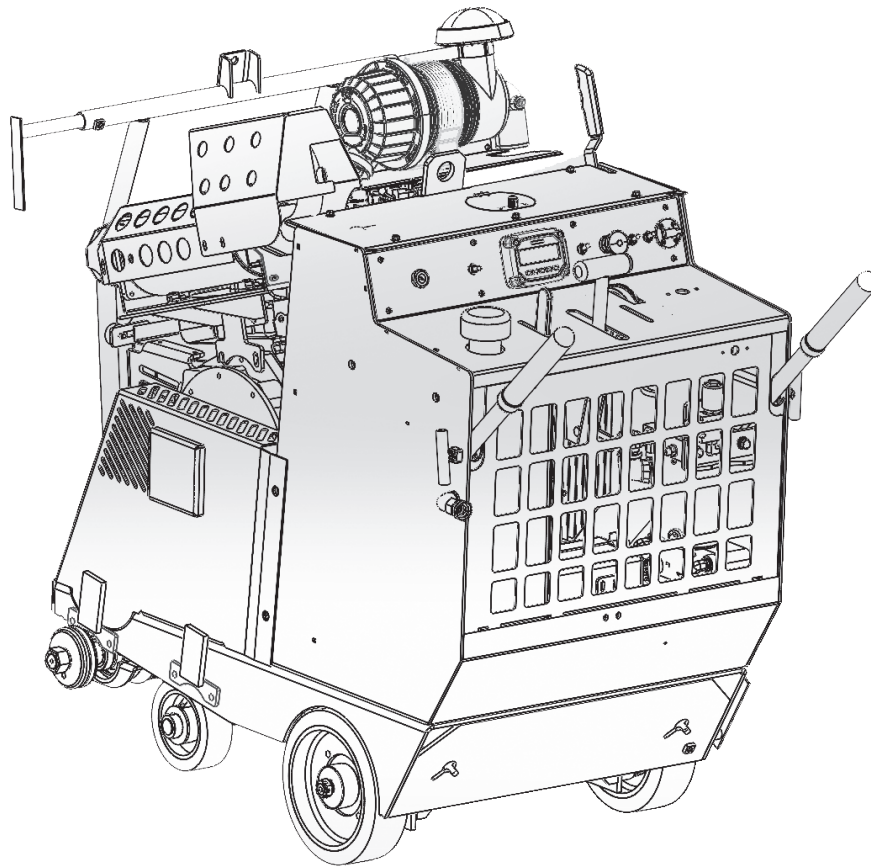


MERIT

AN **ICS** BRAND



Replacement Parts & Accessories Price List

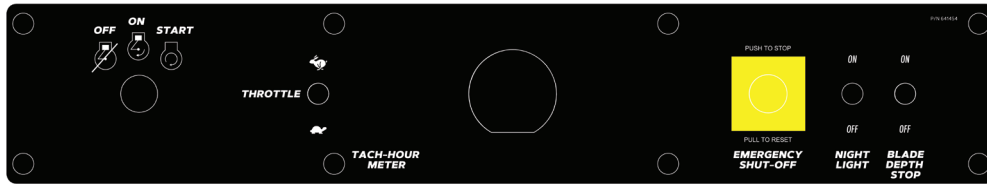


M500SS-57G-R4

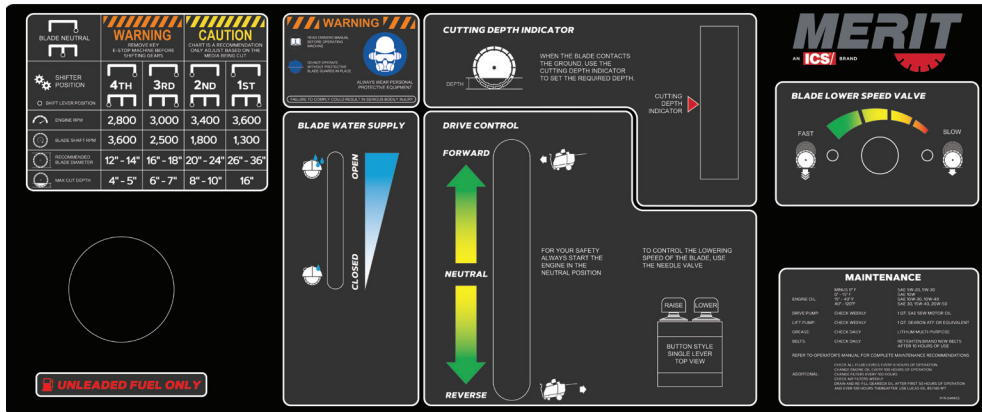
SAFETY DECALS

M500/SS-50G-R4 FLAT SAW

Upper Decal



Lower Decal



Safety decals



Depth wheel decal

Item	Part Number	Qty per saw	Description	Qty Needed for view above
1	640730	1	Upper decal	1
2	640731	1	Lower decal	1
3	490378	1	Safety decals	1
4	490514	2	Merit side logo	2
5	490530	1	Depth gauge decal	1

Engine*

Engine Mfg & Model	Kubota WG1605
Engine HP ¹	57 @ 3,600 rpm
Air Filter	Dry Radial Seal
Cylinders	4
Catalytic Converter	Standard

Dimensions

Weight	1250 lbs / 567 kg (M500SS) 1260 lbs / 571 kg (M500)
Saw Height	47 in / 119cm
Saw Width	32 in / 81cm
Saw Length (pointer and handles extended)	104 in / 264 cm
Saw Length (pointer and handles collapsed)	44 in / 112 cm (M500SS) 47 in / 119 cm (M500)


Blade Specifications

Blade Capacity	30 inch / 76 cm (M500SS) 36 inch / 91 cm (M500)
Max Cut Depth	13 inch / 33 cm (M500SS) 16 inch / 40 cm (M500)
Depth Control	Electric
Blade Mounting	Left & Right
Arbor Size	1 inch / 2.5 cm

Fuel and Lubrication

Fuel Type	Unleaded Gasoline, E0-E10
Fuel Tank Capacity	5.5 Gallons / 20.8 Liters
Engine Oil Capacity	6 Quarts / 5.7 Liters
Engine Oil**	SAE 15W-40 API Class SL
Gearbox Oil	85W-140 (Lucas Brand, recommended)
Gearbox Oil Capacity	1.37 Quarts / 1.30 Liters
Hydraulic Drive Oil	20W-50
Hydraulic Drive Oil Capacity	1.5 quarts / 1.4 Liters
Hydraulic Lift Pump Oil	ATF DEXRON II
Hydraulic Lift Pump Oil Capacity	1.3 Quarts / 1.2 Liters
Coolant Fluid Capacity	8 quarts/7.6 Liters
Cutting Water Requirements & Source Temp	2 gpm / 8 lpm Water temp of < 90° F/ 32° C
Grease	NLGI 2, Lithium-based grease

Coolant Fluid

Coolant Fluid	Ethylene Glycol and Water a 50/50 mixture
Note: Use only ethylene glycol in this engine	
 CAUTION	Do not make the mixture directly in the tank. It is easier to get the correct 50/50 mixture if you make the mixture in a container

Drive Specifications

Drive Speed	0 - 240 FPM
Blade Shaft Drive	1 inch / 2.5 cm with 4 inch / 10 cm arbors
Gear Box	Four speed

*For more engine technical information, refer to the Kubota engine operator's manual.

¹Gross power rating as per SAE J1995, at specified RPM by engine manufacturer

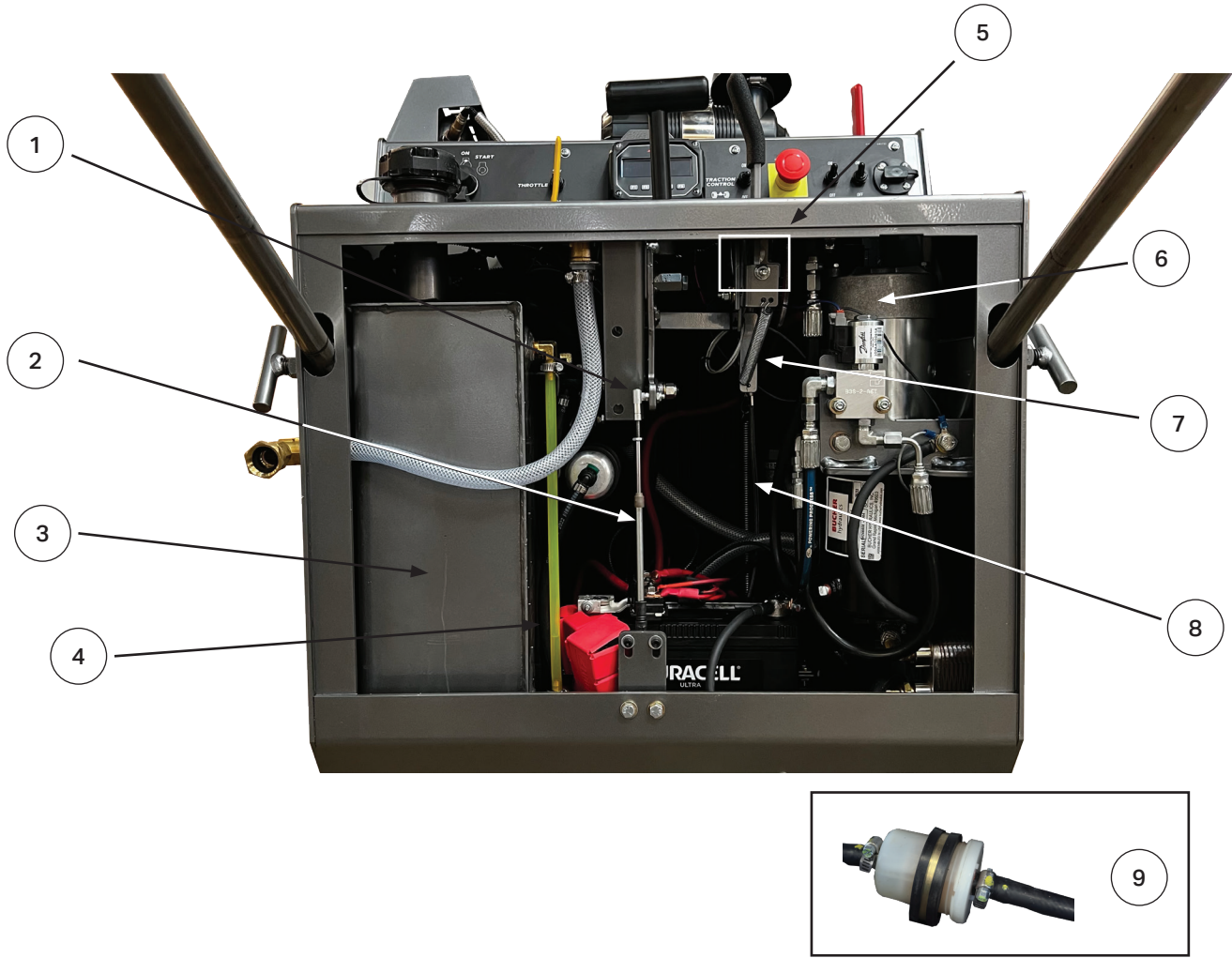
**Refer to the Kubota engine operator's manual for engine oil type according to the ambient temperature



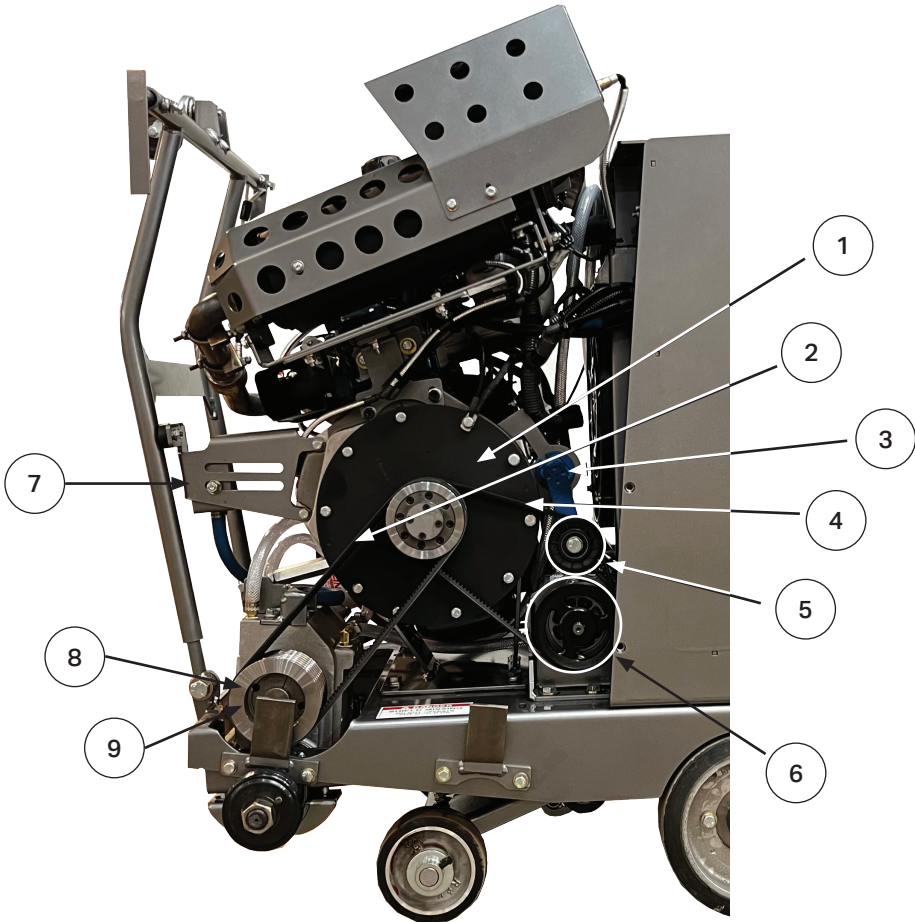
Blade Guards Part #	Description
14IBG-DF	14" blade Capacity
18IBG-DF	18" blade Capacity
20IBG-DF	20" blade Capacity
24IBG-DF	24" blade Capacity
26IBG-DF	26" blade Capacity
30IBG-DF	30" blade Capacity
36IBG	36" blade Capacity
Blade Wrench	
48207	1-1/2-Blade wrench



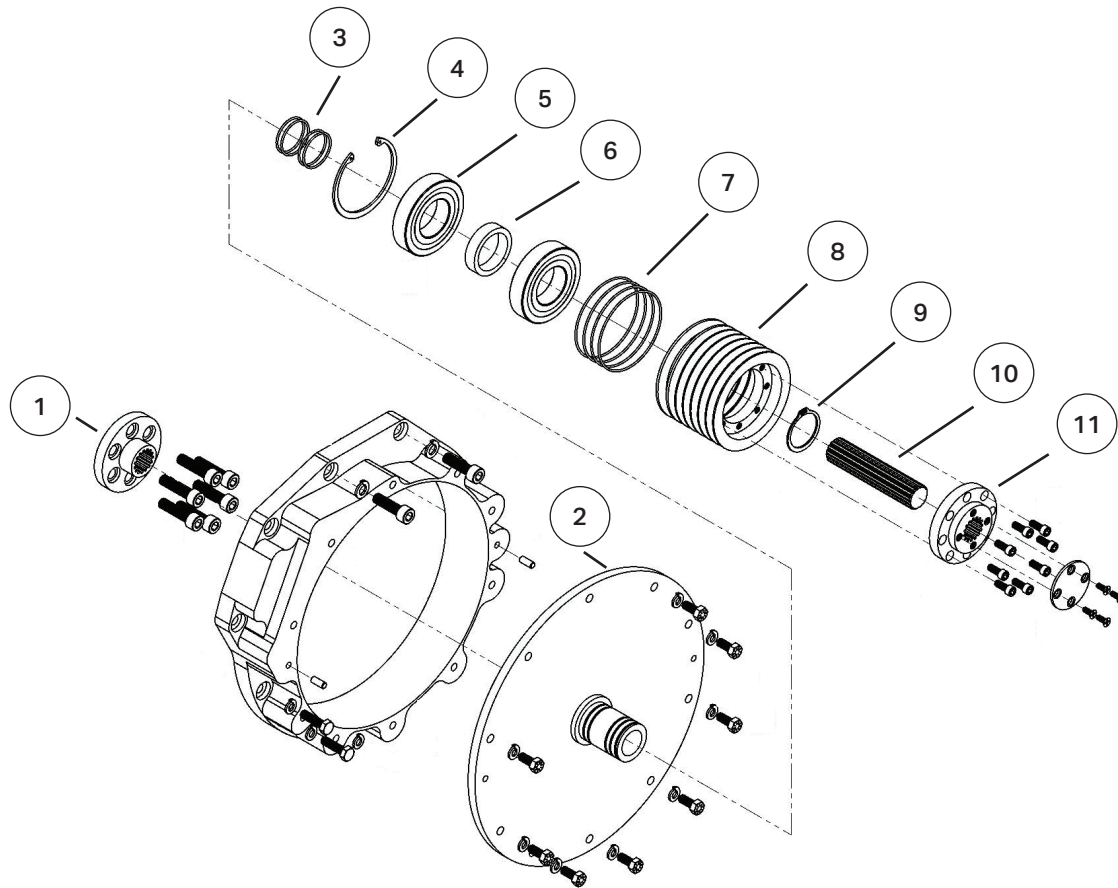
Item	Part Number	Qty per saw	Description	Qty Needed for view above
1	22224	1	Throttle Switch, Gas Saw	1
2	641803	1	Ignition switch	1
3	17171	1	Fuel cap	1
4	21130	1	WATER VALVE ASSEMBLY	1
5	490084	3	Panel latch	2
6	45115	1	T-Handle	1
7	21161	1	Assy. Front Mechanism	1
8	21162	1	Raise & Lower assy.	1
9	646269	1	Depth stop wheel	1
10	22222	3	On/Off Switch	3
11	652265	1	PLUG, NIGHT LIGHT, SAE 2 PIN	1
12	22248RP	1	Emergency shut-off, assy.	1
13	640047	1	Display	1
14	490084	3	PANEL LATCH, SPRING-CAM	3



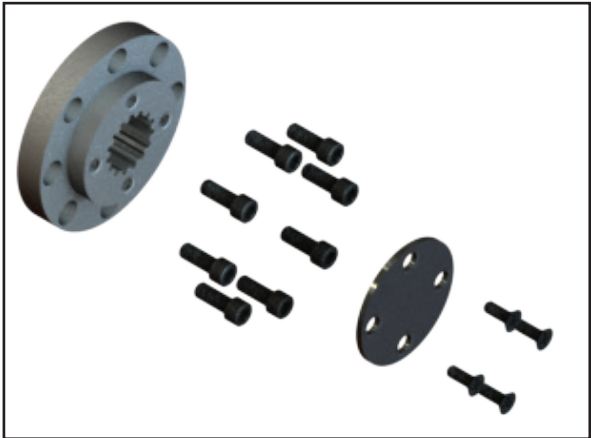
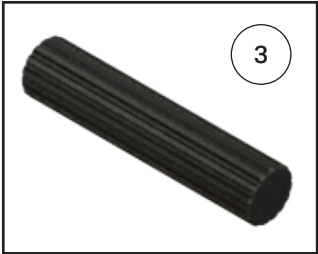
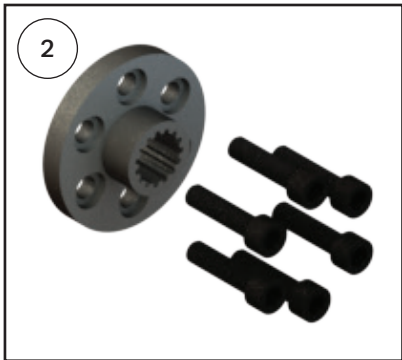
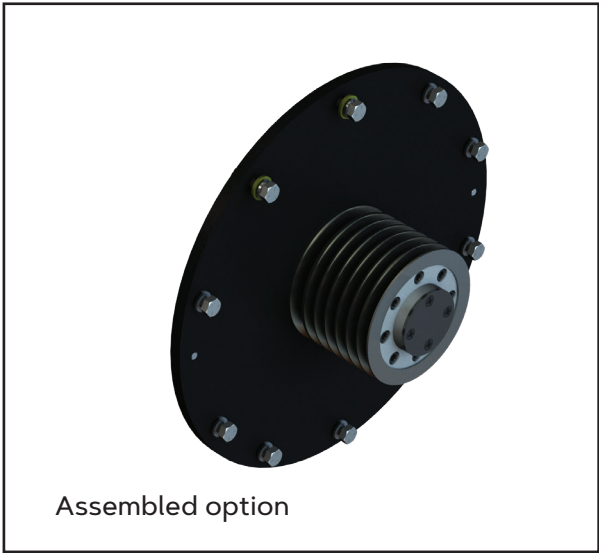
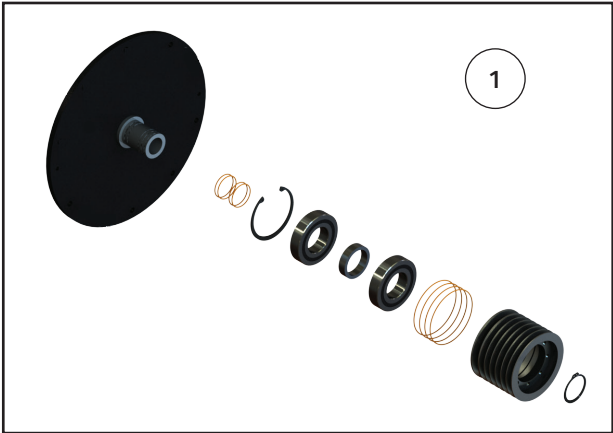
Item	Part Number	Qty per saw	Description	Qty Needed for view above
1	16102	2	BALL JOINT, SPRING LOADED	2
2	22121	1	60 FORWARD/REVERSE CABLE	1
3	640644	1	FUEL TANK, 57G	1
4	652266	1	FUEL LEVEL HOSE, 57G FUEL TANK	1
5	22220	1	BUTTON SWITCH	1
6	14305-B	1	HYD LIFT PUMP, SQUARE MANIFOLD	1
7	41118	1	EXT SPRING, 0.50 OD X 3.75 L X 10 LBS	1
8	647877	1	DEPTH STOP CABLE, M500/SS, SHEATHED	1
9	625133	1	FUEL FILTER	1



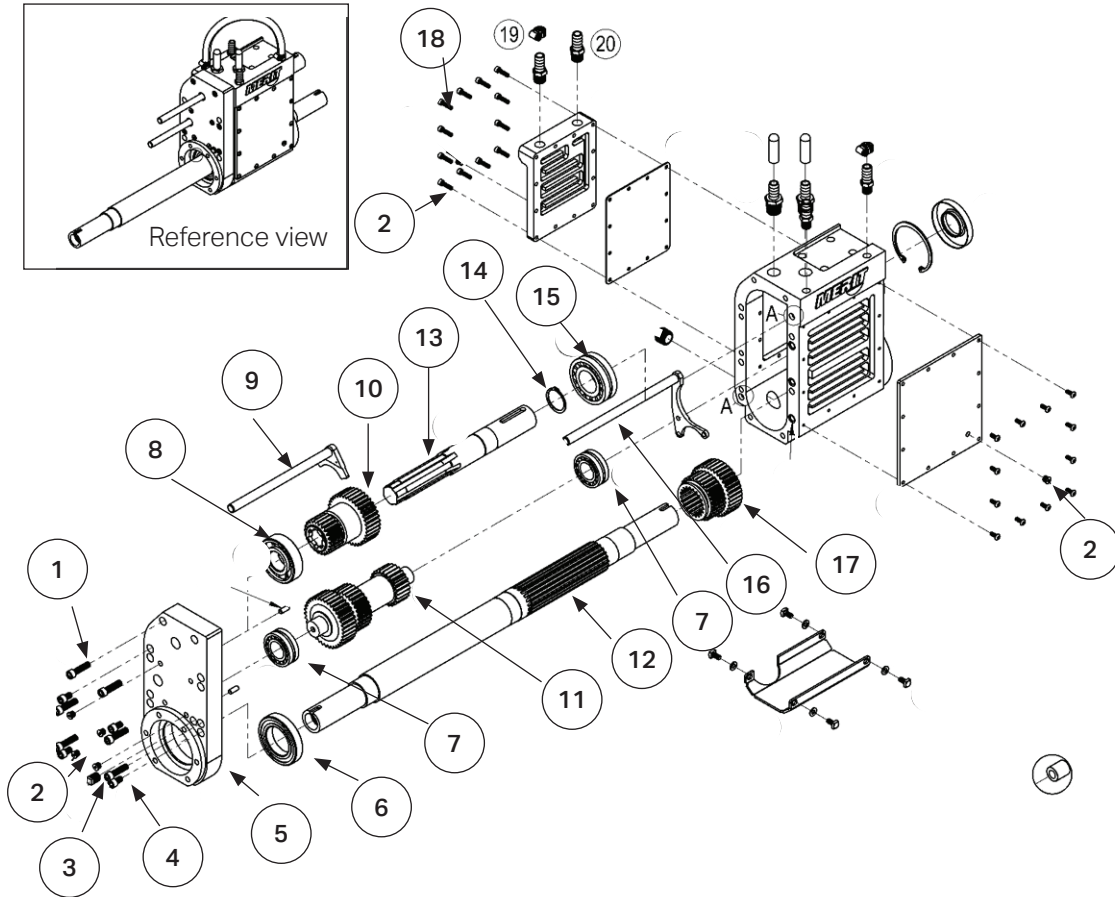
Item	Part Number	Qty per saw	Description	Qty Needed for view above
1	21126	1	PTO KIT (see page 8 for a list of included parts)	1
2	3-3VX390	1	M500SS Belts Be sure to select the correct part number for your saw	2
	3-3VX400	1	M500 Belts Be sure to select the correct part number for your saw	2
3	41119	1	TENSIONER, BLUE (STARTING, 2/15/18)	1
4	AX34	1	(Belt, AX34 SS only) (M500 = AX37)	1
5	13978	1	PULLEY, 1/2 ID 3 OD 1/2 W NYLON	1
6	640728	1	PULLEY, HYDROSTAT, 57G, REAR PIVOT ONLY	1
7	640489RP	1	POINTER STOP BRACKET, 57G	1
8	13187	1	PULLEY, 6/3VX4.75-2012, MD GEARBOX	1
9	10185	1	TAPER LOCK BUSHING, 2012 X 1-3/8	1



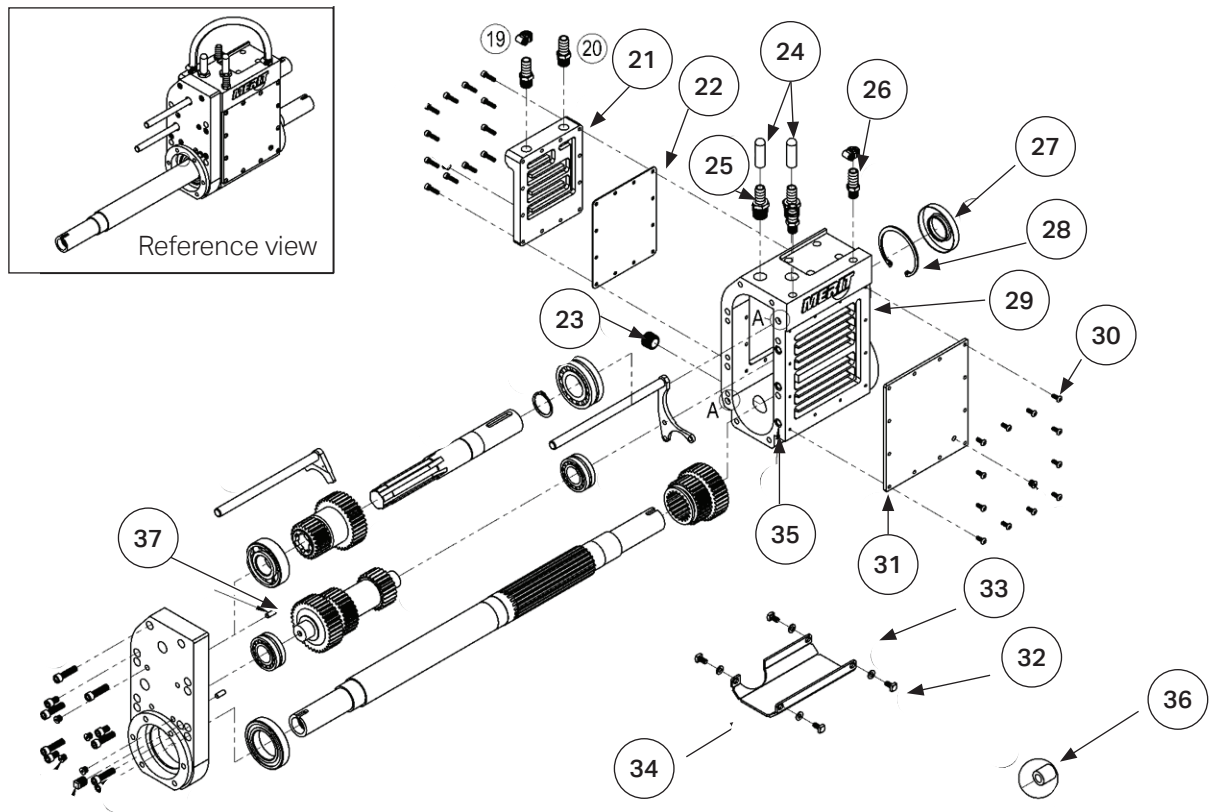
Item	Part Number	Qty per saw	Description	Qty Needed for view above
1	490002	1	SPLINED DRIVE FLANGE, 44HP/50HP	1
2	490019	1	PTO, ADAPTER PLATE/BEARING SUPPORT	1
3	12116	4	O-RING, NO. 028 HIGH-TEMP	1
4	12113	1	INTERNAL SNAP RING, 3	1
5	10134	2	BEARING, 6208 2RS	1
6	10354	1	O-DRVE BRG, .481 SPCR, KUB, HYDAI, 60DSS	1
7	12160	4	O-RING, NO. 042 HIGH-TEMP	4
8	13185	1	PULLEY, PTO, 7/3V4.10	1
9	12110	1	EXTERNAL SNAP RING, 1-9/16	1
10	10319	1	SPLINED DRIVE SHAFT, 4.5 INCH	1
11	17168	1	SPLINED DRIVE CAP, 400	1



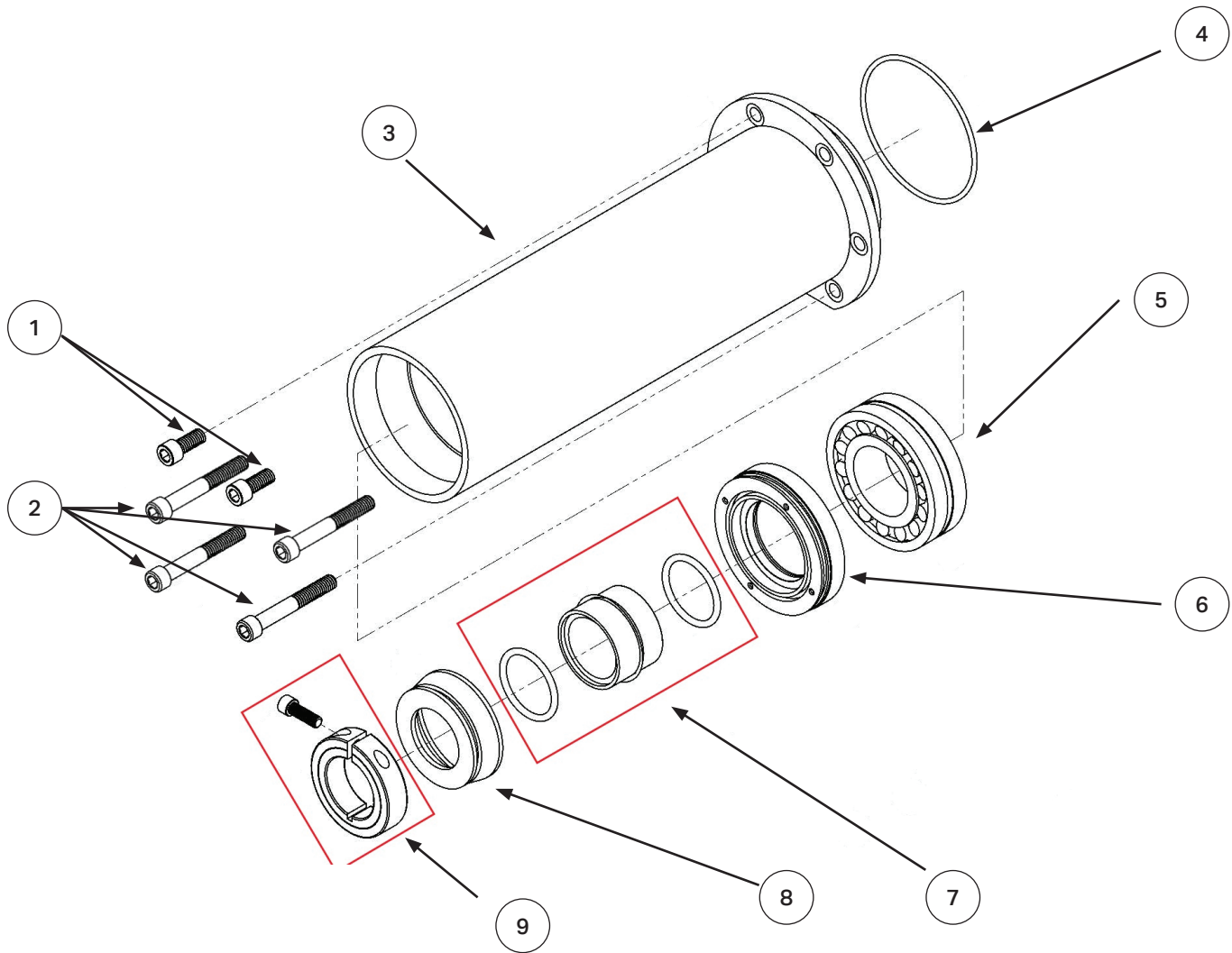
Item	Part Number	Qty per saw	Description	Qty Needed for view above
1	21126	1	PTO KIT, 50G/44D	1
2	490002	1	SPLINED DRIVE FLANGE, 44HP/50HP	1
3	10319	1	SPLINED DRIVE SHAFT, 4.5 INCH	1
4	628683	1	SPLINE DRIVE KIT, 50G/44D (Complete)	1



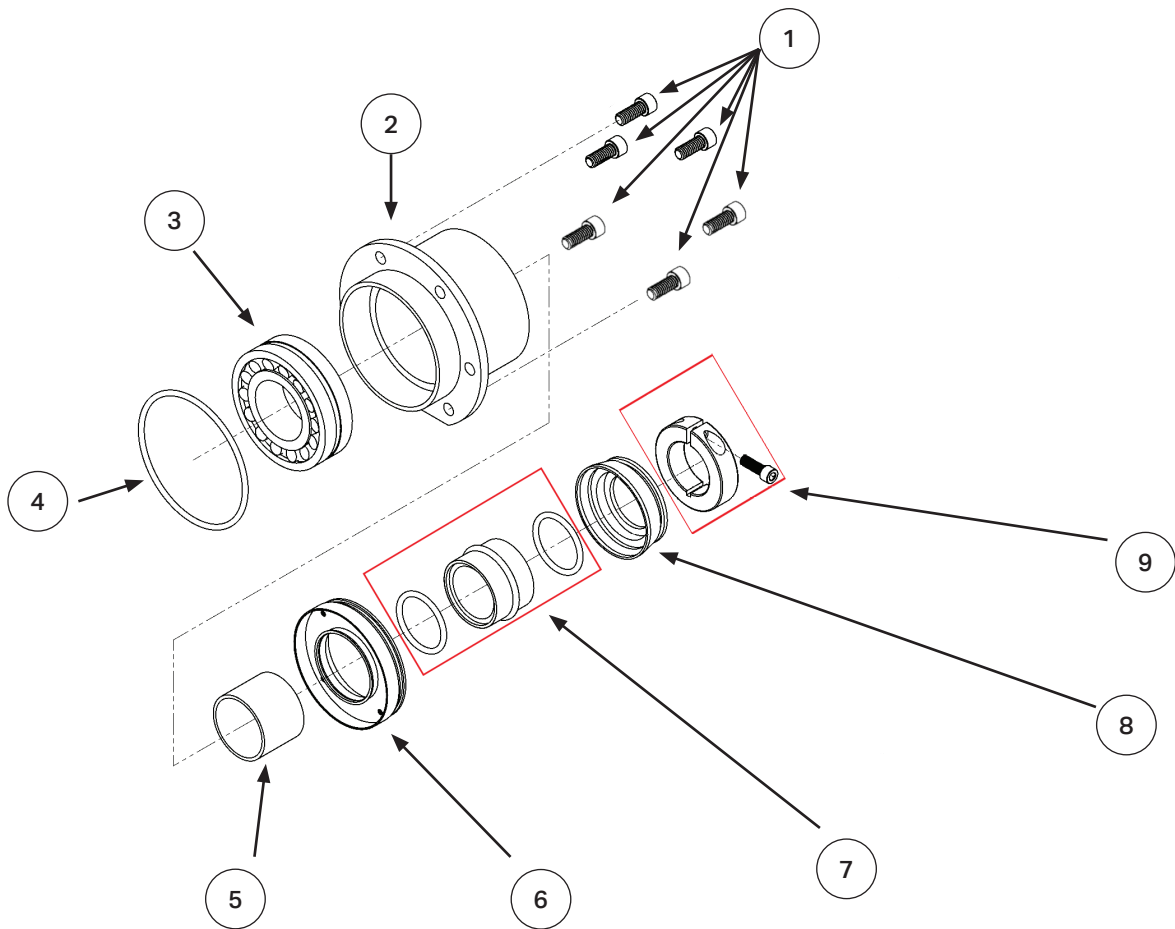
Item	Part Number	Qty per saw	Description	Qty Needed for view above
1	source locally	N/A	SOCKET HEAD CAP SCREW 5/16-18" X 1-1/4"	6
2	12105	1	PLUG, NO 2 ORB FLUSH HEX PLUG	6
3	12103	1	FITTING, 1/4 NPT SQUARE HEAD PLUG	1
4	source locally	N/A	SOCKET HEAD CAP SCREW 5/16-18" X 1/2"	4
5	490005	1	END COVER, MD GEARBOX	1
6	10132	1	BEARING, 6009	1
7	10137	1	BEARING, 22205	2
8	10135	1	BEARING, 6306	1
9	10264	1	UPPER SHIFT FORK, MD GEARBOX	1
10	10272	1	SLIDER GEAR, UPPER MD GEARBOX	1
11	10268	1	IDLER GEAR, MD GEARBOX	1
12	10318	1	OUTPUT SHAFT	1
13	10314	1	INPUT SHAFT, MD	1
14	12119	1	EXTERNAL SNAP RING, 1-3/8"	1
15	10138	1	BEARING, 22207	1
16	490006	1	SHIFT FORK, LOWER MD GEARBOX	1
17	490003	1	LOWER SLIDER GEAR, MD GEARBOX	1
18	source locally	N/A	10-24 x 3/4" SOCKET HEAD CAP SCREW	12



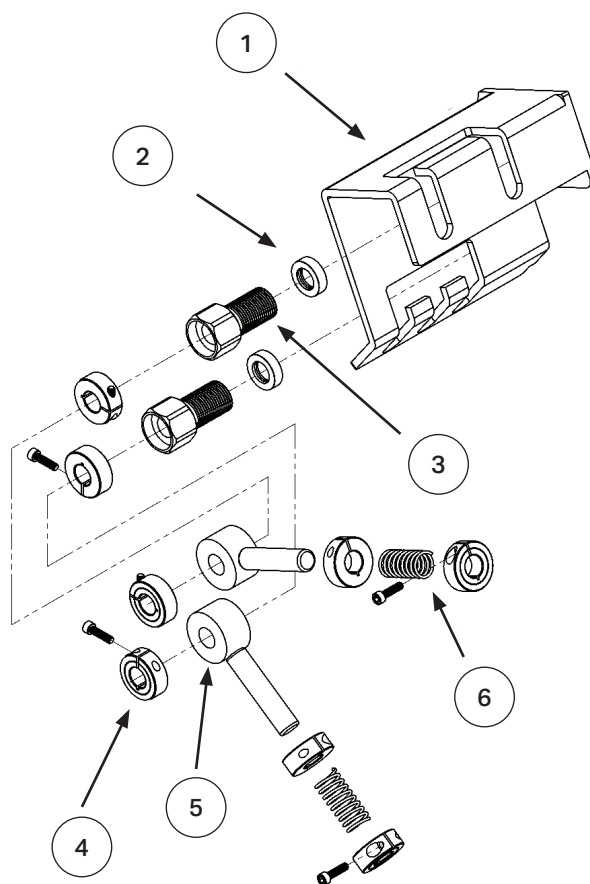
Item	Part Number	Qty per saw	Description	Qty Needed for view above
19	14102	1	HOSE CLAMP, 7/16 to 25/32 SAE 6	2
20	14168	1	FITTING, 1/2" BARB X 3/8" MPT	2
21	490004	1	COOLER COVER CASTING	1
22	17209	1	INTERMEDIATE PLATE, FOR GB	1
23	12106	1	FITTING, 1/2" MPT MAGNETIC PLUG	1
24	17164	1	RUBBER END CAP	2
25	14163	1	FITTING, 1/2" BARB X 1/2" MPT 90 DEG ELBOW	2
26	14159	1	FITTING, 1/2" BARB X 1/4" MPT	2
27	12137	1	SEAL, 35 X 72 X 10MM INPUT	1
28	12112	1	INTERNAL SNAP RING, 2-3/4"	1
29	490008	1	"CENTER CASTING, MD GEARBOX (recommend ordering item 35 & 36) "	1
30	source locally	N/A	BUTTON HEAD SOCKET CAP, 10-24 X 1/2"	12
31	490210	1	COOLER PLATE	1
32	source locally	N/A	HEX HEAD CAP SCREW 1/4-20 X 1/2" GRADE 5 ZINC	4
33	source locally	N/A	SPLIT LOCK WASHER, 1/4" MEDIUM	4
34	490014	1	SKID PLATE, MD GEARBOX	1
35	12114	1	O-RING, NO. 012	3
36	10187	1	DRILL BUSHING, 7/16" X 1/2" X 0.251"	2
37	16118	1	DOWEL PIN, 1/4" X 5/8 "	2



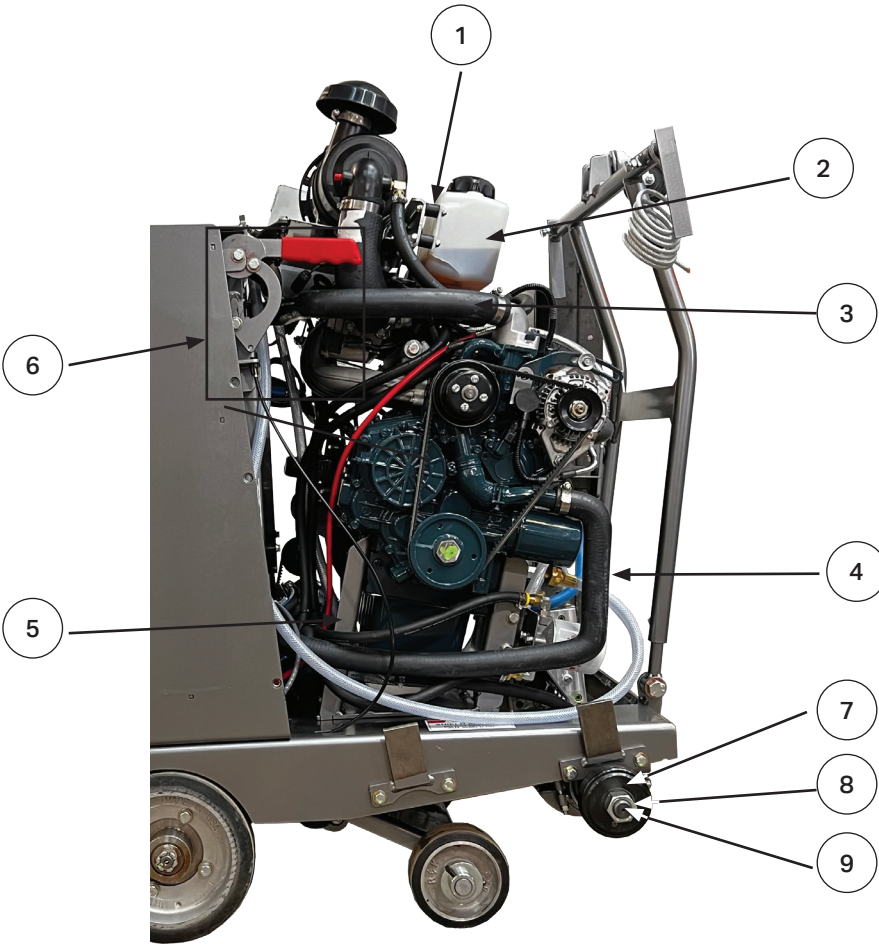
Item	Part Number	Qty per saw	Description	Qty Needed for view above
1	Source locally	2	SOCKET HEAD CAP SCREW, 5/16-18 X ¾"	2
2	Source locally	4	SOCKET HEAD CAP SCREW, 5/16-18 X 2-1/4"	4
3	11120	1	LONG HOUSING, 400/SS GEARBOX	1
4	12118	1	O-RING, NO. 151	1
5	10139	1	BEARING, 22208	1
6	12140	2	SEAL PACKAGE, MD GEARBOX	1
7	12141	2	SEAL SLEEVE PACKAGE, MD GEARBOX	1
8	17165	2	SLURRY CUP, MD GEARBOX	1
9	15153	1	SHAFT COLLAR, 1-3/8	1



Item	Part Number	Qty per saw	Description	Qty Needed for view above
1	Source locally	6	SOCKET HEAD CAP SCREW, 5/16-18 X 3/4"	6
2	490017	1	SHORT HOUSING, MD GEARBOX	1
3	10139	1	BEARING, 22208	1
4	12121	1	O-RING, NO. 237	1
5	10347	1	SPACER, MD GEARBOX	1
6	12140	2	SEAL PACKAGE, MD GEARBOX	1
7	12141	2	SEAL SLEEVE PACKAGE, MD GEARBOX	1
8	17165	2	SLURRY CUP, MD GEARBOX	1
9	15153	1	SHAFT COLLAR, 1-3/8	1



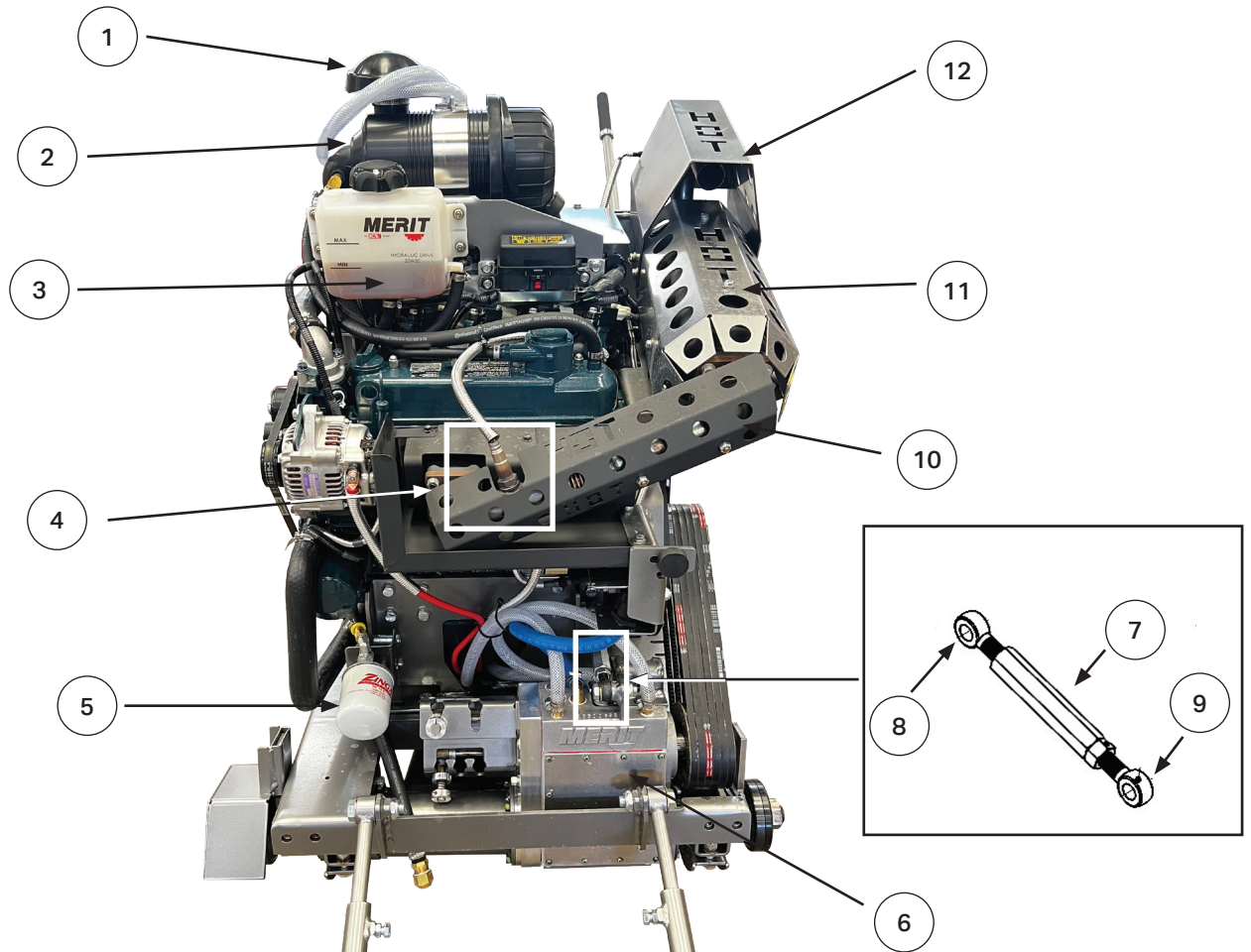
Item	Part Number	Qty per saw	Description	Qty Needed for view above
1	18118	1	SHIFT GATE, MD GEARBOX	1
2	12139	2	OIL SEAL, SHIFTER	2
3	11113	2	SHIFTER HOUSING	2
4	490044	8	SPLIT SHAFT COLLAR, 1/2 ALUMINUM	8
5	16110	2	SHIFT LEVER, GEARBOX	2
6	490091	2	SHIFTER SPRING	2



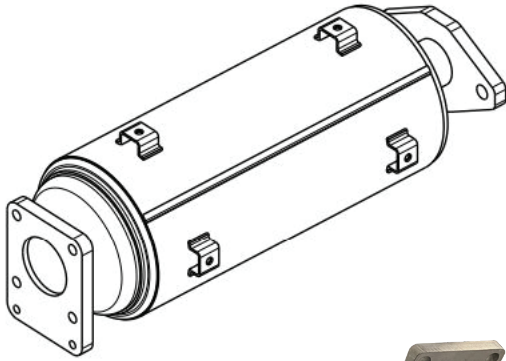
Item	Part Number	Qty per pack	Description	Qty Needed for view above
1	46213	1	VIBRATION-DAMPING MOUNT, 1/4-20 NEOPRENE	4
2	42102	1	COOLANT RESERVOIR	1
3	14300	1	RADIATOR HOSE, UPPER 400/600 KUBOTA	1
4	14299	1	RADIATOR HOSE, LOWER 400/600 KUBOTA	1
5	645527RP	1	MOTOR MOUNT, M500/SS-57G, R4/F4	1
6	645623	1	KIT, PARKING BRAKE, M500	1
7	631531	1	4" BLADE COLLAR KIT (INNER/OUTER) FOR 14" - 24" BLADES	2
7	641884	1	5" BLADE COLLAR KIT (INNER/OUTER) FOR 24" - 30" BLADES (SS MODEL) AND 24" - 36" (STANDARD FRAME MODEL)	2
8	15200	1	BLADE NUT, LHT 1-14	1
not shown	15199	1	BLADE NUT, RHT GR8 HEX, 1-14, YELLOW	1
9	15307RP	1	STUD, 1-14 X 3-1/2" LHT (STANDARD)	1
not shown	15306RP	1	STUD, 1-14 X 3-1/2" RHT (STANDARD)	1

FRONT VIEW

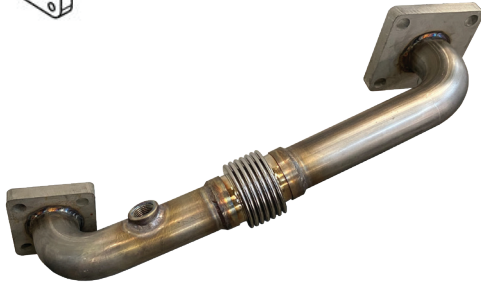
M500/SS-50G-R4 FLAT SAW



Item	Part Number	Qty per saw	Description	Qty Needed for view above
1	23175	1	AIR FILTER HOOD, 44D/50G/48G	1
2	23162	1	AIR FILTER CLEANER ASSY W/ELEMT 50G,M48G	1
3	42101	1	OIL RESERVOIR TANK, 2 QUART	1
4	22212	2	O2 SENSOR, 50G/61G (rear sensor not shown)	2
5	23239	1	FILTER ELEMENT, HYDRO-GEAR, DRIVE SYST	1
6	490020	1	ASSEMBLY, 400/SS MD GEARBOX	1
7	15193	1	COUPLING NUT, RHT/LHT, 1/2-13X4	1
8	15139	1	EYEBOLT, 1/2-13 RHT	1
9	15138	1	EYEBOLT, 1/2-13 LHT	1
10	652044RP	1	"HEAT SHIELD, FLEX PIPE (incl. U-bolt clamps & distorted thread lockout)"	1
11	652046RP	1	"BRACKET, PRIMARY CATALYST SHIELD (incl. hardware)"	1
12	652047RP	1	"BRACKET, MUFFLER SECONDARY SHIELD (incl. hardware)"	1



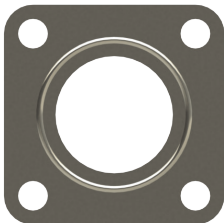
Part # 23895RP,
CATALYTIC CONVERTER, 50G/61G KUBOTA
(Includes heat wrap)



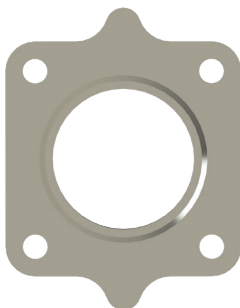
Part # 23143RP,
FLEX PIPE, 50G (Includes gaskets)



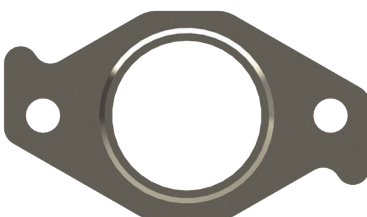
Part # 23142RP,
TAIL PIPE, 50G (Includes gaskets)



Part # 490414,
GASKET, ENGINE TO FLEX PIPE 50G



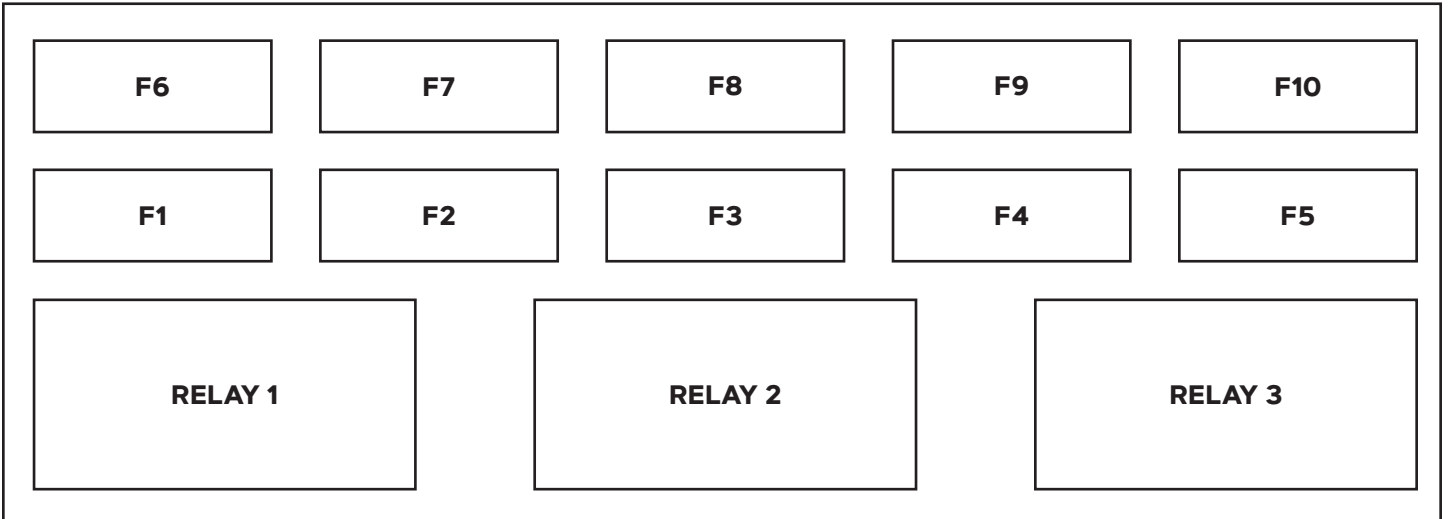
Part # 490181,
GASKET, FLEX-PIPE TO CATALYST 50G



Part # 23208,
GASKET, CAT-TAIL PIPE 50G, 61G, 87G

Battery	
Group	SLI51
CCA/CA	450

ENGINE FUSE BOX

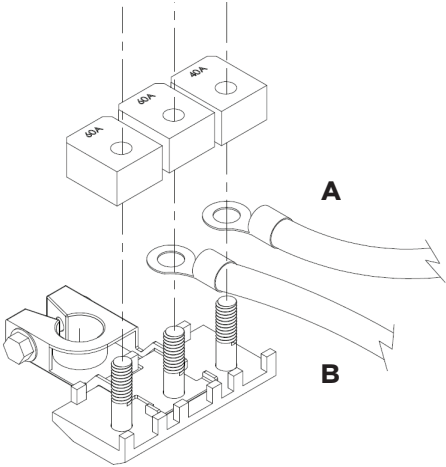
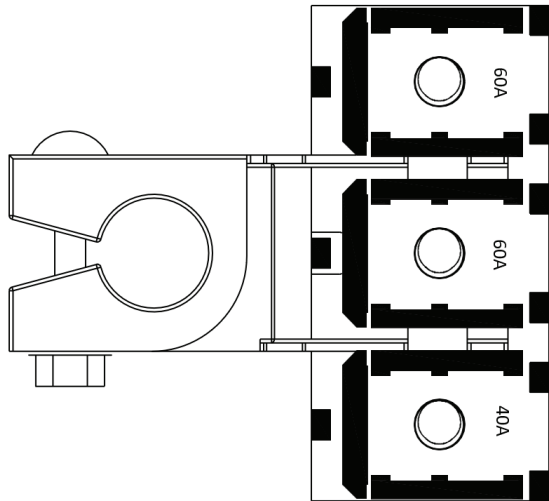


ENGINE HARNESS FUSES AND RELAYS

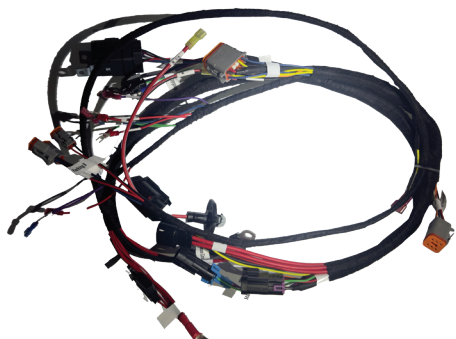
POSITION	ITEM	FUNCTION	AMPS/VOLTS	TYPE
RELAY 1	Relay	Fuel Pump	12V	CB1A-T-R-12V
RELAY 2	Relay	Power	12V	CB1A-T-R-12V
RELAY 3	Relay	Starter	12V	CB1A-T-R-12V
F1	Fuse	ECM	10 A	Mini
F2	Fuse	VSW	5 A	Mini
F3	Fuse	Starter	30 A	Mini
F4	Fuse	Fuel Pump	15 A	Mini
F5	Fuse	Empty	-	Mini
F6	Fuse	Ignition	15 A	Mini
F7	Fuse	Empty	-	Mini
F8	Fuse	Empty	-	Mini
F9	Fuse	Empty	-	Mini
F10	Fuse	Empty	-	Mini

OEM harness fuses				
Location	Function	Fuse	Style	Merit Part #
Positive Battery terminal	Alternator fuse	60 Amps	ZCASE	645934
Positive Battery terminal	Fan fuse	60 Amps	ZCASE	645934
Positive Battery terminal	ECU power supply	40 Amps	ZCASE	645933
Battery + terminal	Night light fuse	10 Amps	ATO	Source Locally
Battery + terminal	Main VIC power supply	15 Amps	ATO	Source Locally

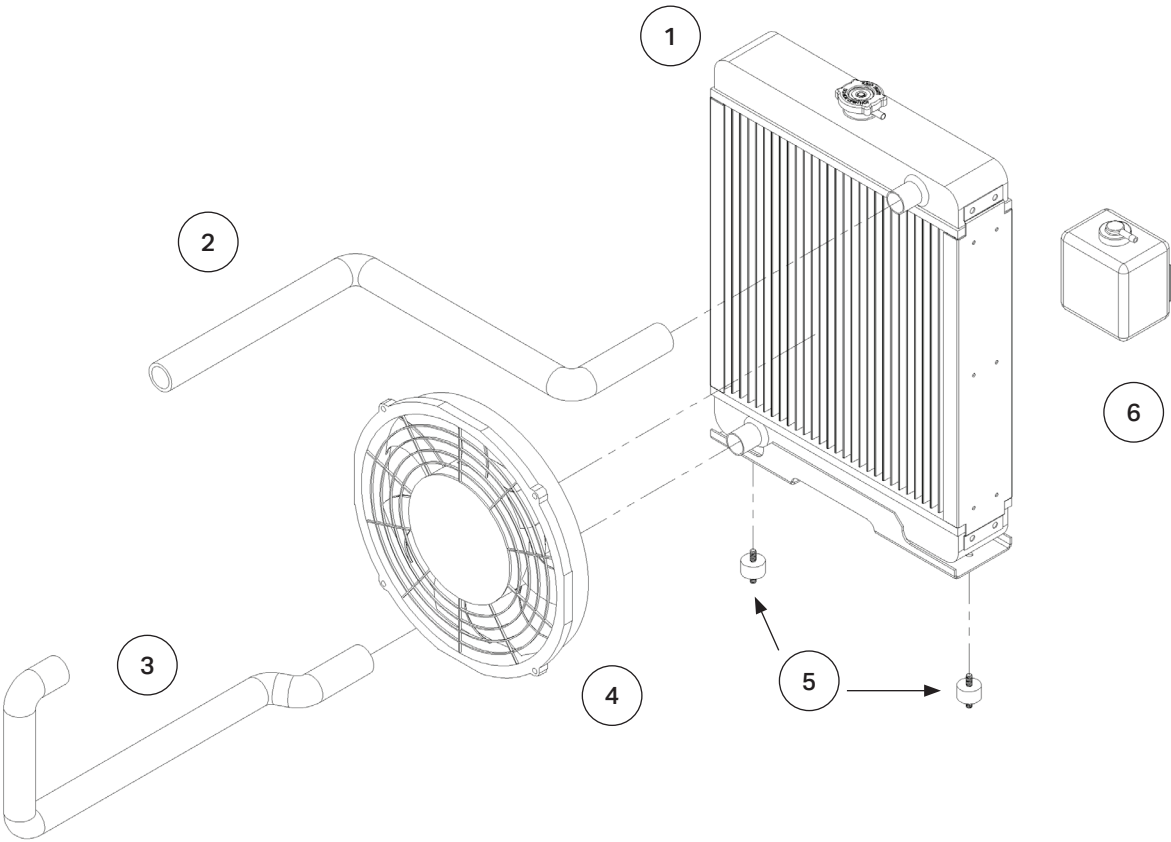
TOP VIEW



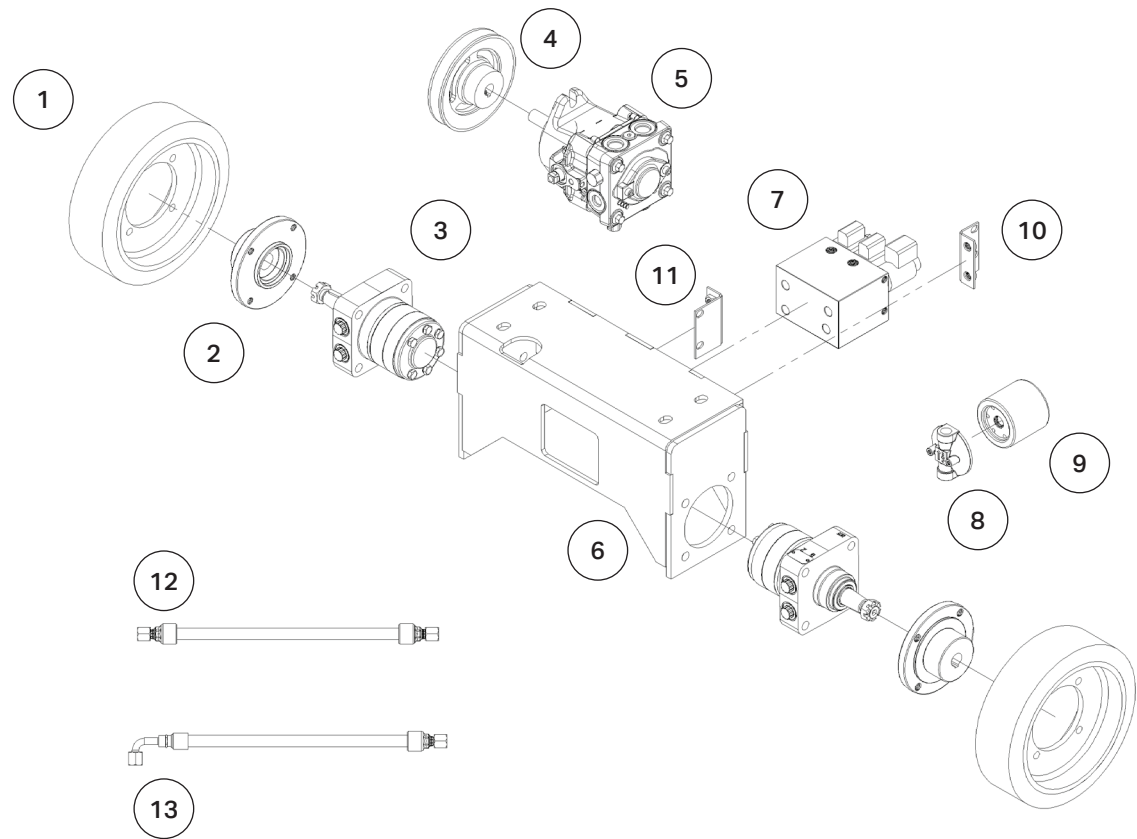
Note: The positive starter cable (A) and lift pump cable (B), connection is under the Z-Case fuse, to avoid fuse popping.



VIC main harness, Part # 642405

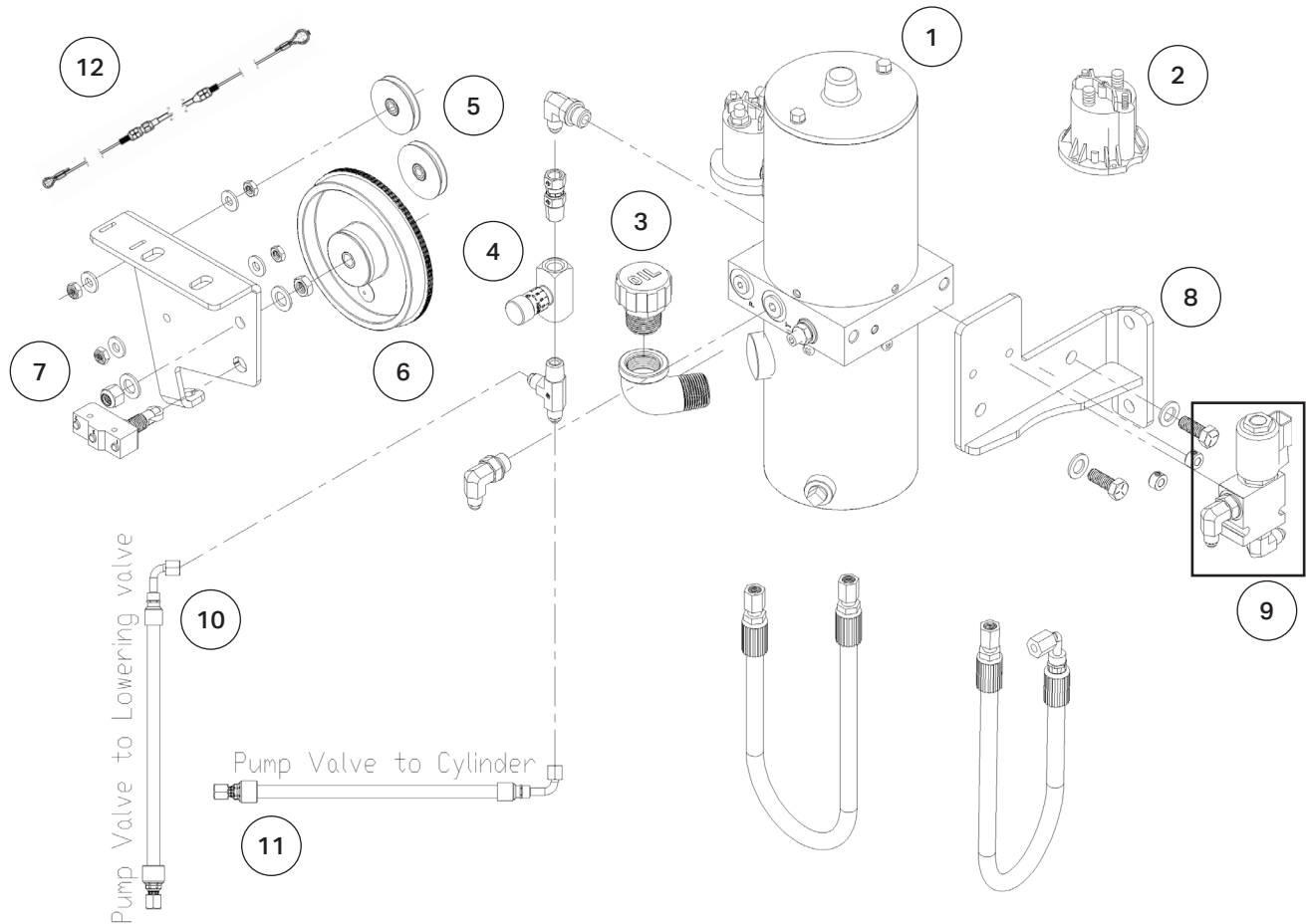


Item	Part Number	Qty per saw	Description	Qty Needed for view above
1	23211	1	Radiator	1
2	14300	1	Radiator hose, upper	1
3	14299	1	Radiator hose, Lower	1
4	640046	1	Electric fan	1
5	628614	2	Radiator mount	2
6	42102	1	Coolant reservoir	1



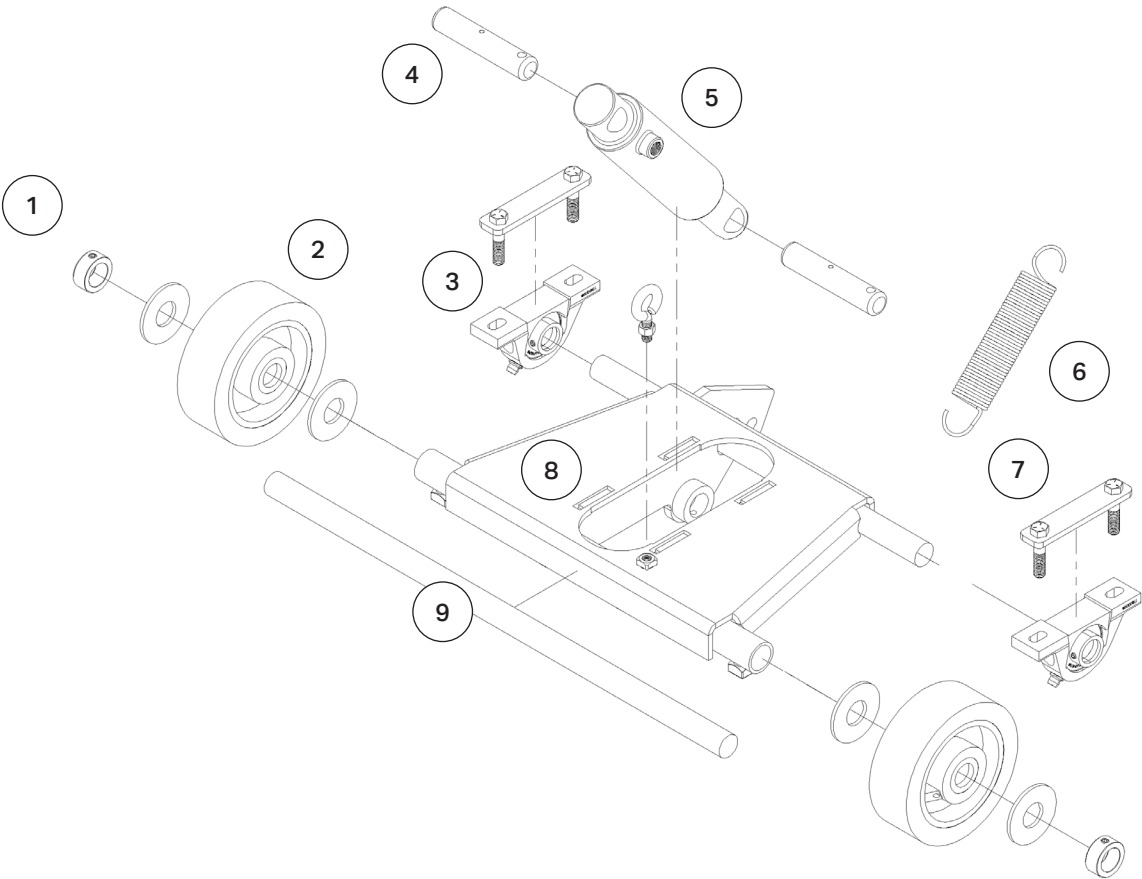
Item	Part Number	Qty per saw	Description	Qty Needed for view above
1	639195	2	Rear wheel	2
2	640498	2	Machined wheel hub	2
3	634824	2	Wheel motor	2
4	640728	1	Pulley	1
5	14311	1	Pump, drive system	1
6	640334RP	1	Bracket wheel motor assembly	1
7	634823	1	HTC Manifold	1
8	23238	1	Filter head, drive system	1
9	23239	1	Filter element, drive system	1
10	641899RP	1	Manifold bracket, short	1
11	641900RP	1	Manifold bracket, long	1
12	642022	2	Hose	2
13	642023	4	Hose	4

REAR PIVOT SAWS ONLY

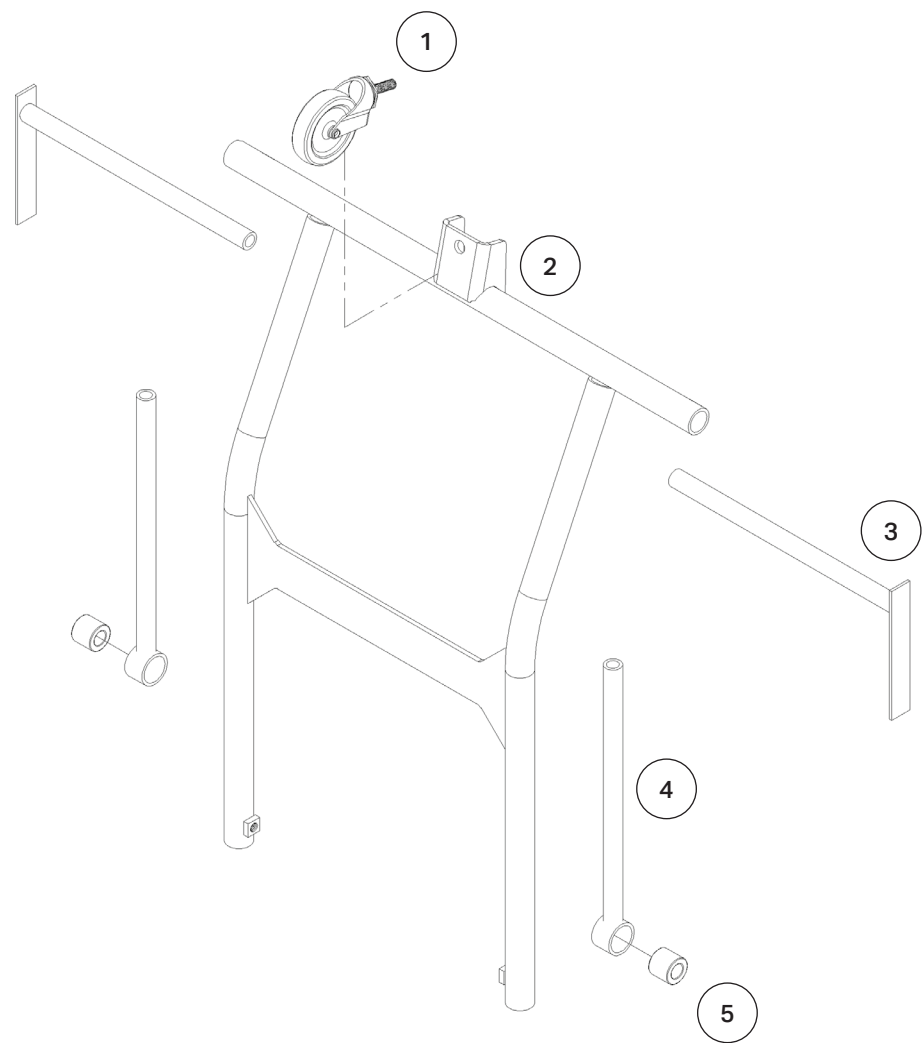


Item	Part Number	Qty per saw	Description	Qty Needed for view above
1	14305-B	1	Lift pump	1
2	490469	1	Solenoid	1
3	17162	1	Breather cap	1
4	14316	1	Lift control valve	1
5	646328	2	Pulley	2
6	646269	1	Depth stop wheel assy.	1
7	642407	1	Harness for depth stop with switch	1
8	641902RP	1	Lift pump bracket assy.	1
9	652267	1	VALVE ASSEMBLY, M500/SS DEPTH STOP	1
10	23730	1	Hose	1
11	647909	1	Hose	1
12	647877	1	DEPTH STOP CABLE, M500/SS, SHEATHED	1

& COMPONENTS CYLINDER



Item	Part Number	Qty per saw	Description	Qty Needed for view above
1	Source locally	2	1" Collar	2
2	45133	2	Front wheel	2
3	10145	2	Pillow block Bearing	2
4	M1021529	2	Pin	2
5	490037	1	Lift cylinder	1
6	41112	1	Spring	1
7	18455	2	Pillow bearing bracket	2
8	10122RP	1	Front axle assy	1
9	490001	1	Axle bar	1



Item	Part Number	Qty per saw	Description	Qty Needed for view above
1	45132	1	Pointer frame wheel	1
2	18205	1	Pointer frame	1
3	19138	2	Pointer guide	2
4	46123	2	Pointer frame lower tube	2
5	10195	2	Bushing	2